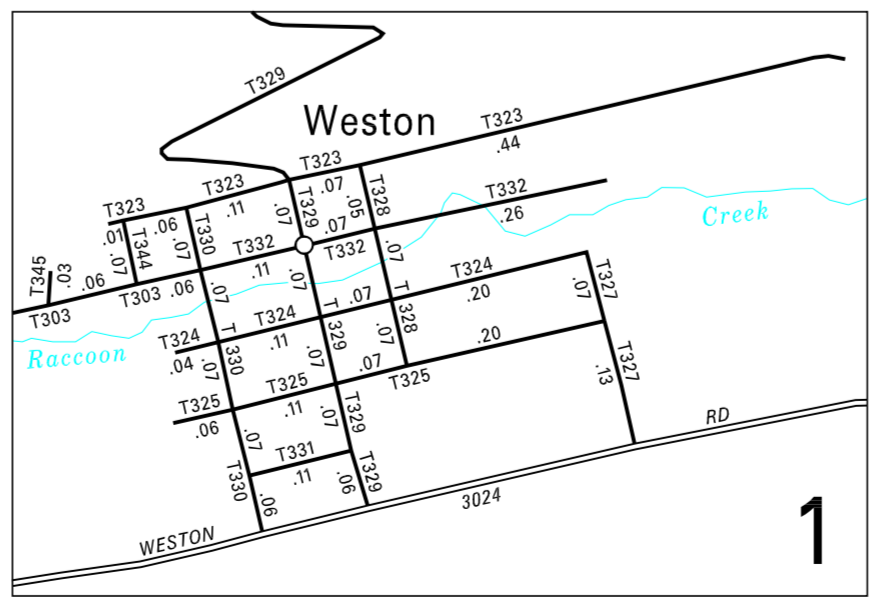
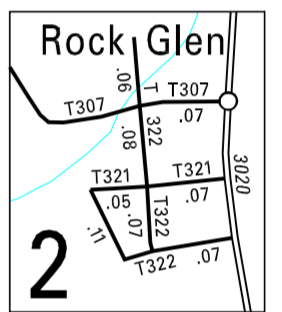
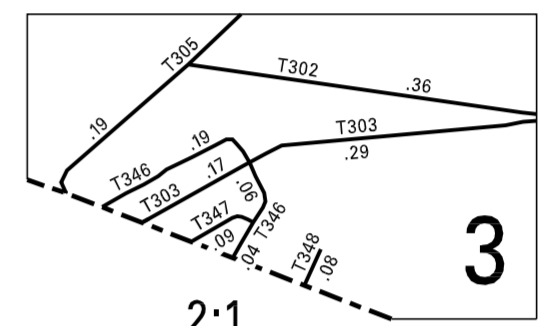
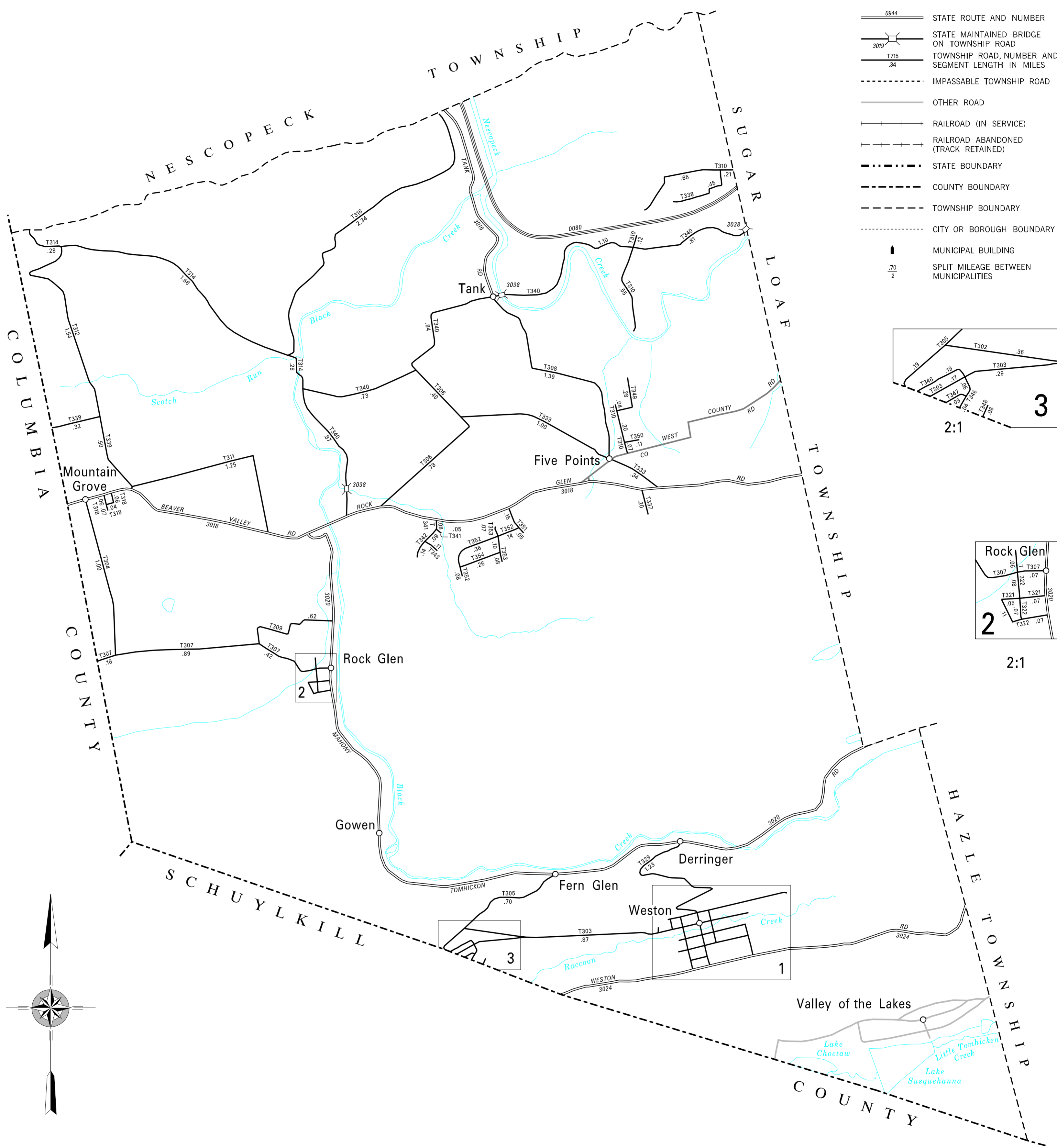


- 302 NUREMBERG BYP
- 303 LONDON ST
- 304 SEWELL LA
- 305 NUREMBERG MOUNTAIN RD
- 306 GOLF COURSE RD
- 307 CHURCH ST
- 308 MOUNTAIN LAUREL TRL
- 309 PARK ST
- 310 WINDFIELD VILLAGE RD
- 311 BOULEVARD RD
- 312 CHICKS LA
- 314 MOUNTAIN RD
- 316 HILLTOP DR
- 318 PINE BARK ST
- 321 FALLS ST
- 322 PINE ST
- 323 MOUNTAIN ST
- 324 MARKET ST
- 325 MAIN ST
- 327 CENTER ST
- 328 SIGMOND ST
- 329 DERRINGER RD
- 330 LINE ST
- 331 GROVE ST
- 332 HAZLETON ST
- 333 RED FOX LA
- 337 GATEWAY RD
- 338 LAROCK RD
- 339 SCOTCH VALLEY RD
- 340 CEDARHEAD RD
- 341 SUCK RUN DR
- 342 MACINTOSH DR
- 343 DELICIOUS DR
- 344 SPRING ST
- 345 FACTORY RD
- 346 APPLE ST
- 347 BANK ST
- 348 STAFFER AV
- 349 HICKORY RD
- 350 WINDFIELD RD
- 351 ALEXANDER ST
- 352 HANNA ST
- 353 DAWN ST
- 354 TAMMY LA

**LEGEND**

- LIMITED ACCESS HIGHWAY
- STATE ROUTE AND NUMBER
- STATE MAINTAINED BRIDGE ON TOWNSHIP ROAD
- TOWNSHIP ROAD, NUMBER AND SEGMENT LENGTH IN MILES
- IMPASSABLE TOWNSHIP ROAD
- OTHER ROAD
- RAILROAD (IN SERVICE)
- RAILROAD ABANDONED (TRACK RETAINED)
- STATE BOUNDARY
- COUNTY BOUNDARY
- TOWNSHIP BOUNDARY
- CITY OR BOROUGH BOUNDARY
- MUNICIPAL BUILDING
- SPLIT MILEAGE BETWEEN MUNICIPALITIES



TOTAL MILES	
Township Road System	32.63*
State Highway System	16.59
<b>Total</b>	<b>49.22</b>

\* Includes ACT 32 Turnback Mileage of 5.17

**BLACK CREEK  
SECOND CLASS TOWNSHIP MAP  
LUZERNE COUNTY**

PREPARED BY THE  
**PENNSYLVANIA DEPARTMENT OF TRANSPORTATION**  
BUREAU OF PLANNING AND RESEARCH  
GEOGRAPHIC INFORMATION DIVISION  
IN COOPERATION WITH THE  
**U.S. DEPARTMENT OF TRANSPORTATION**  
FEDERAL HIGHWAY ADMINISTRATION  
MUNICIPAL CODE 40 202  
REVISED PER FORM 990 DATED 6-15-12

