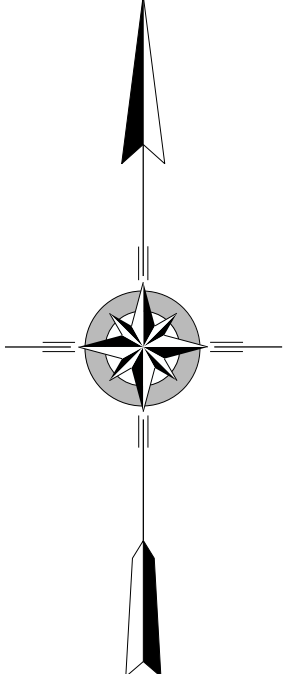
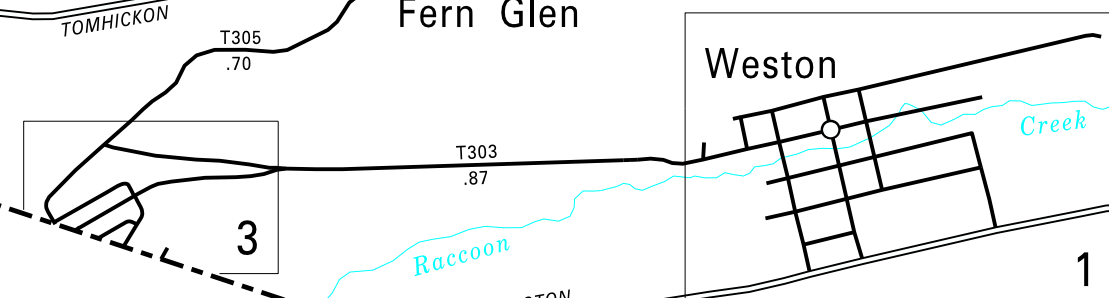
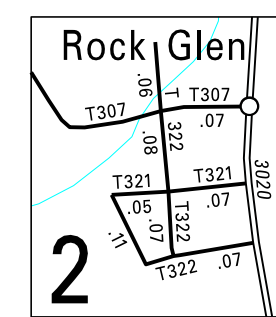
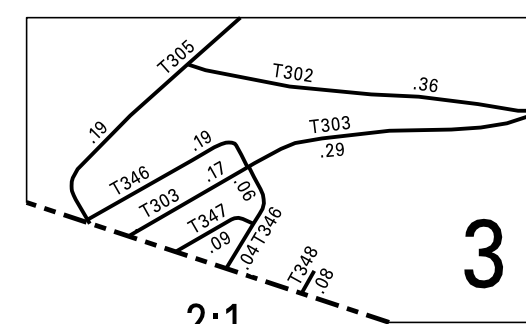
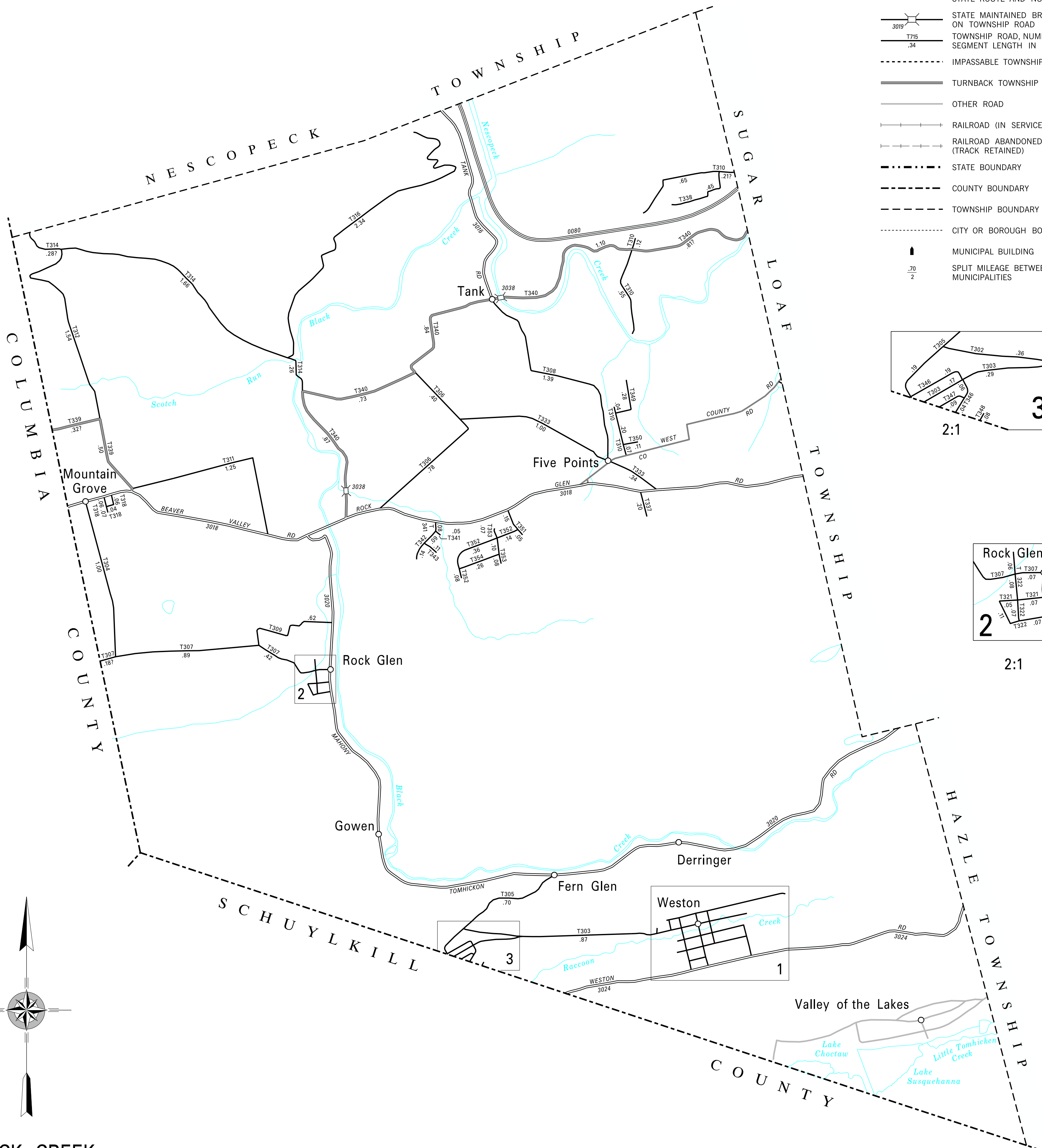


302 NUREMBERG BYP  
 303 LONDON ST  
 304 SEWELL LA  
 305 NUREMBERG MOUNTAIN RD  
 306 GOLF COURSE RD  
 307 CHURCH ST  
 308 MOUNTAIN LAUREL TRL  
 309 PARK ST  
 310 WINDFIELD VILLAGE RD  
 311 BOULEVARD RD  
 312 CHICKS LA  
 314 MOUNTAIN RD  
 316 HILLTOP DR  
 318 PINE BARK ST  
 321 FALLS ST  
 322 PINE ST  
 323 MOUNTAIN ST  
 324 MARKET ST  
 325 MAIN ST  
 327 CENTER ST  
 328 SIGMOND ST  
 329 DERRINGER RD  
 330 LINE ST  
 331 GROVE ST  
 332 HAZLETON ST  
 333 RED FOX LA  
 337 GATEWAY RD  
 338 LAROCK RD  
 339 SCOTCH VALLEY RD  
 340 CEDARHEAD RD  
 341 BUCK RUN DR  
 342 MACINTOSH RD  
 343 DELICIOUS DR  
 344 SPRING ST  
 345 FACTORY RD  
 346 APPLE ST  
 347 BANK ST  
 348 STAFFER AV  
 349 HICKORY RD  
 350 WINDFIELD RD  
 351 ALEXANDER ST  
 352 DAWN ST  
 353 HANNA ST  
 354 TAMMY LA

COPIES OF THIS MAP ARE AVAILABLE AT NOMINAL COST  
 CONTACT:  
 PENNSYLVANIA DEPARTMENT OF TRANSPORTATION  
 SALES STORE  
 P.O. BOX 3451  
 HARRISBURG, PENNSYLVANIA 17105-3451  
 TELEPHONE: (717)787-6746

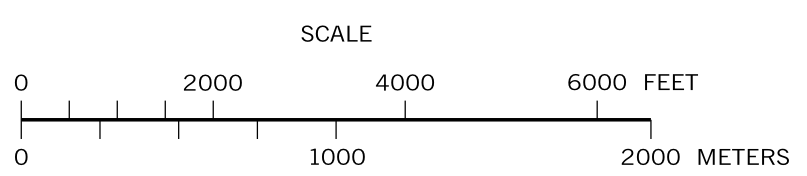
**LEGEND**

- LIMITED ACCESS HIGHWAY
- STATE ROUTE AND NUMBER
- STATE MAINTAINED BRIDGE ON TOWNSHIP ROAD
- TOWNSHIP ROAD, NUMBER AND SEGMENT LENGTH IN MILES
- IMPASSABLE TOWNSHIP ROAD
- TURNBACK TOWNSHIP ROAD
- OTHER ROAD
- RAILROAD (IN SERVICE)
- RAILROAD ABANDONED (TRACK RETAINED)
- STATE BOUNDARY
- COUNTY BOUNDARY
- TOWNSHIP BOUNDARY
- CITY OR BOROUGH BOUNDARY
- MUNICIPAL BUILDING
- SPLIT MILEAGE BETWEEN MUNICIPALITIES



**BLACK CREEK  
 SECOND CLASS TOWNSHIP MAP  
 LUZERNE COUNTY**

PREPARED BY THE  
**PENNSYLVANIA DEPARTMENT OF TRANSPORTATION**  
 BUREAU OF PLANNING AND RESEARCH  
 GEOGRAPHIC INFORMATION DIVISION  
 IN COOPERATION WITH THE  
**U.S. DEPARTMENT OF TRANSPORTATION**  
 FEDERAL HIGHWAY ADMINISTRATION  
 MUNICIPAL CODE 40 202  
 THIS MAP IS PUBLISHED AS A SUPPLEMENTAL  
 DOCUMENTATION OF LIQUID FUELS TAX FUND MILEAGES  
 REVISED PER FORM 990 DATED 11-16-18



TOTAL MILES	
Township Road System	31.40*
State Highway System	16.59
Total	47.99

\* Includes ACT 32 Turnback Mileage of 5.17